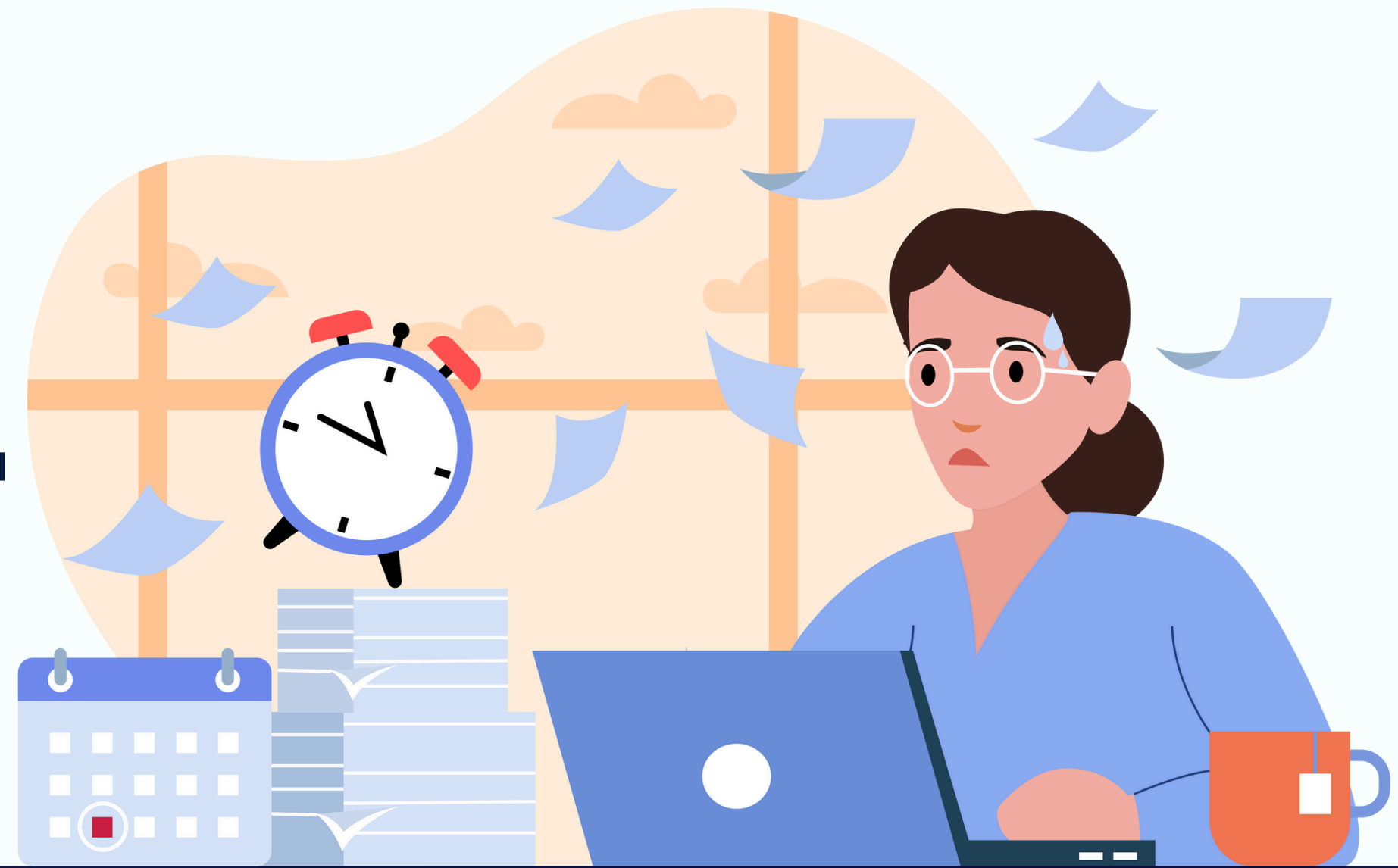




# OVERTIME MANAGEMENT SYSTEM



Presented by STAR LINK

# INTRODUCTION

Star Link's Overtime Management Software enables seamless configuration of overtime settings, including minimum and maximum overtime limits, calculation factors for weekly offs, and vacation hour adjustments.

The system allows approval authorities to approve, reject, or escalate overtime requests based on company policies and regulations.

With comprehensive overtime reports, organizations can effortlessly track worked hours, overtime hours, weekly off hours, and holiday hours for each employee within a selected period. This ensures accurate payroll processing and efficient workforce management.

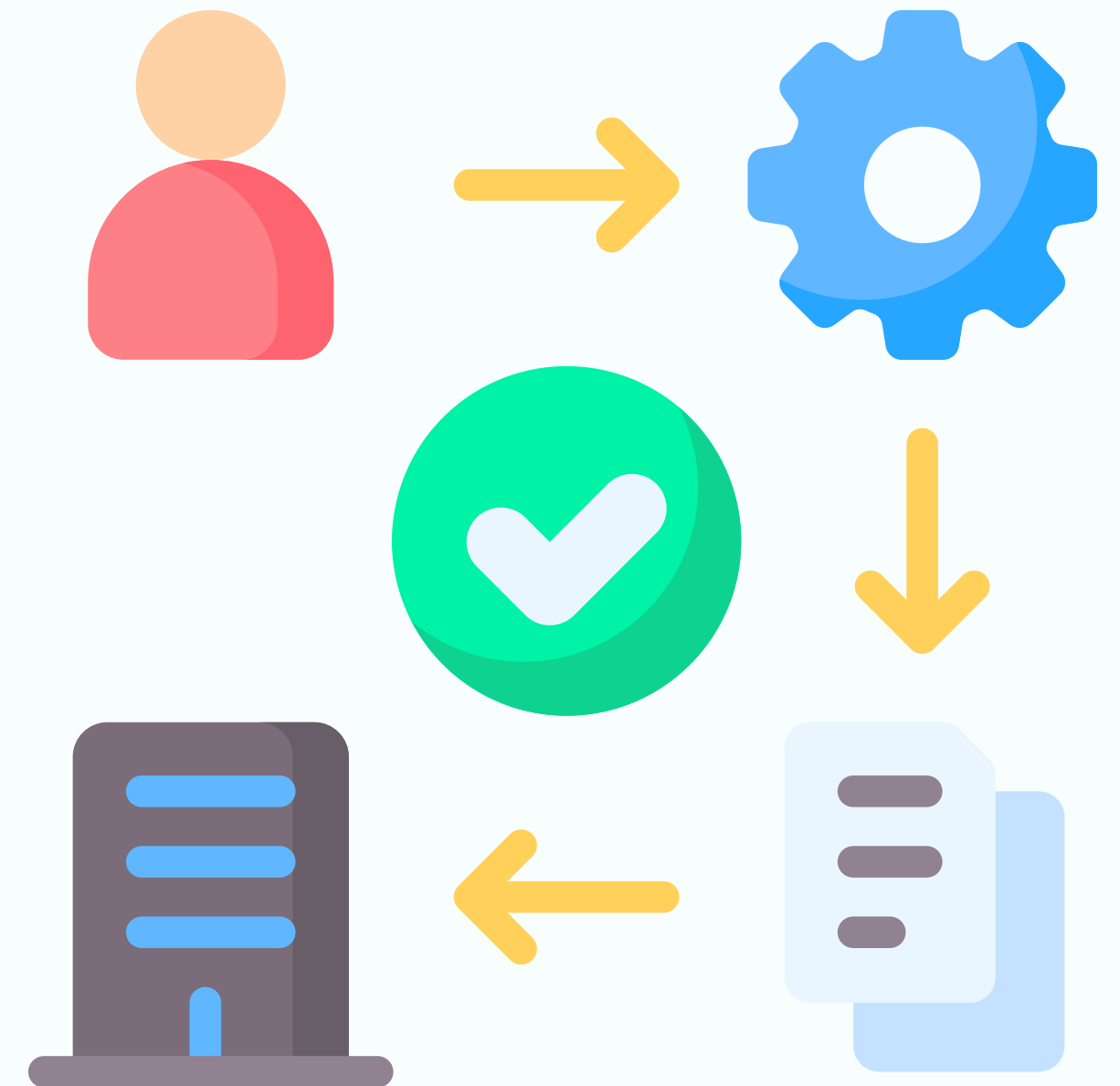


# APPROVAL PROCESS

> **Single-Level Approval: Direct approval by supervisor.**

> **Multi-Level Approval: Approval required at multiple levels (Supervisor → HR → Admin).**

> **Custom Approval Policy: Admin can set specific rules for different departments.**



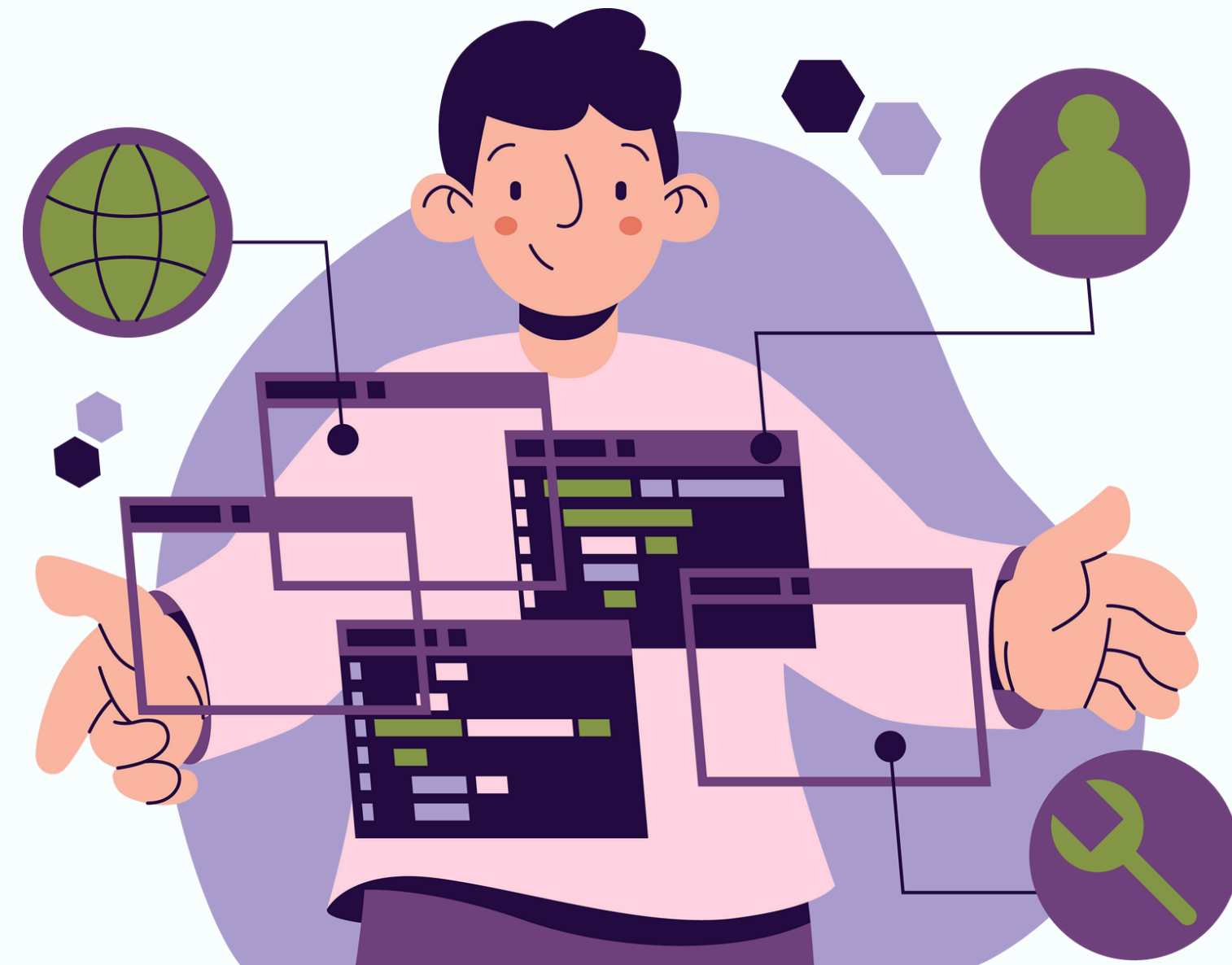
# HOW IT WORKS?

- > **Step 1: Employee works beyond scheduled hours.**
- > **Step 2: System logs overtime automatically.**
- > **Step 3: Manager reviews & approves overtime request.**
- > **Step 4: Approved overtime is processed for payroll.**
- > **Step 5: Employees can view overtime status in real-time.**



# ADVANTAGES OF OVERTIME MANAGEMENT SOFTWARE

- Convenient and flexible overtime schedule.
- Multi level approval/rejection maintains transparency.
- Precised and accurate overtime hours calculation ensure extended incomes for personnel and mutual employer.
- Ability to handle complex and critical shift timings including 12 or 24 hours & different time zones overtime calculation.
- Capable to administer overtime related bottlenecks like busy, short or long duration, covering employee absentism & shortage of workers with no need to appoint extra team of workers.
- No job disruption in accordance to the workload.



# REPORTS & ANALYTICS

## Available Reports:

- Employee-wise Overtime Summary
- Shift-wise Overtime Report
- Weekly & Monthly Overtime Trends
- Pending & Approved Overtime Records
- Cost Analysis & Payroll Integration Report



# SYSTEM REQUIREMENTS

- > PROCESSOR: I3 & ABOVE
- > RAM: 8GB
- > HARD DISK: 320GB & MORE
- > OS: WINDOWS 10 & ABOVE
- > ANTI VIRUS: ANY UPDATED
- > SQL SERVER 2014 STANDARD OR HIGHER



# WHY WE ARE AHEAD OF OTHERS:

- **Trusted by 10000+ Clients Across India**
- **70+ Highly Skilled engineer in Pan India**
- **User-Friendly & Scalable Solutions**
- **Complete Attendance & Payroll**

## Integration

- **Cost-Effective & Highly Secure**
- **24/7 Support & Customization**

## Available





# THANK YOU

For more details,  
visit: [www.starlinkindia.com](http://www.starlinkindia.com)  
Contact Us: 011 4084 8888